

FREQUENTLY ASKED QUESTIONS:

# FACT SHEET

## 2023 UTILITY BILLING RATES

### CITY OF LESLIE



### Why did the City increase the rates and when does it take effect?

The City changed the rates based on the recommendations of a third-party consultant after a water and sewer rate study. Based on the large projects starting, increases are necessary to guarantee the revenue to make vital improvements to our Wastewater Treatment Plant (WWTP). New rates are effective October 1, 2023.

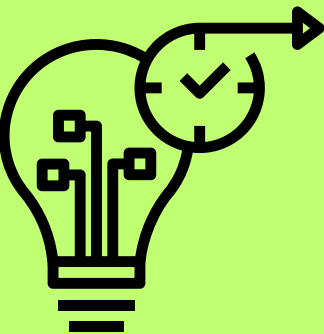
### Why can't we use tax dollars to pay for the water and sewer utility costs?

The Water and Sewer Fund is an Enterprise Fund, and these funds are self-supporting, meaning all revenue generated from user charges must pay for the expenditures of the system.



### Will the ready-to-serve costs change in the future?

It depends on what other large projects are in the Capital Improvement Plan (CIP) and any increase in financing needs. The water and sewer systems will always have maintenance and replacement costs and will need upgrades as determined by City Staff and the Leslie City Council.



### What are the new rates?

The rate structure continues to include a ready-to-serve charge with a per unit commodity charge for water and sewer. The commodity charge will continue to be based in units where each unit equals 1,000 gallons. The new rates were approved by the Leslie City Council on September 19, 2023, and will be reflected in bills being mailed out January 2024.



### What if I can't afford my bill?

Please call 211 or contact Capital Area Community Services at 517-676-1065, or the Michigan Department of Health and Human Services at 517-241-3740 or online: <http://www.michigan.gov/mdhhs>. These entities have options and resources to help.



FREQUENTLY ASKED QUESTIONS:

# FACT SHEET

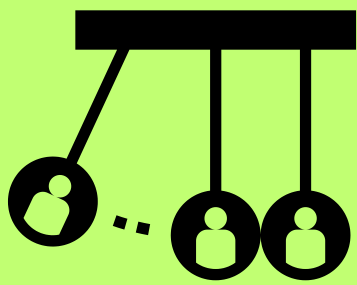
## 2023 UTILITY BILLING RATES

### CITY OF LESLIE



### Will everyone pay the same ready-to-serve rate?

Everyone pays the ready-to-serve fees based on their meter size. A household normally has a 5/8" meter and that is the base amount for the ready-to-serve costs. All users of the system with a 5/8" meter pay the same commodity charge rate. The commodity charge for water is \$5.68 per unit and the sewer commodity charge is \$10.60 per unit (1,000 gallons)



Rate Type	Ready-to-serve Water	Ready-to-serve Sewer	Ready-to-serve Total
5/8" Inch	\$70.98	\$72.76	\$143.74
Usage Per 1,000 Gallons	\$5.68	\$10.60	\$16.28

### These are the quarterly overall impact for typical residential users:

User Type	Current Bill	New Bill
Residential (0 unit)	\$130.68	\$143.74
Residential average usage (4 units)	\$189.88	\$208.86
Residential high usage (8 units)	\$249.08	\$273.98



### How do our ready-to-serve charges compare?

Many communities charge ready to serve on water and sewer bills. This chart, from the rate study presentation, shows how our ready-to-serve compares to local communities. Totals are calculated for quarterly (3-month) billing cycles.



City /Township	Water Ready to Serve	Sewer Ready to Serve	Total Ready to Serve
Grand Ledge	\$94.08	\$95.49	\$189.57
St. Louis	\$76.32	\$99.12	\$175.44
Alma	\$81	\$90.00	\$171.00
Williamston	\$99.21	\$68.19	\$167.40
St. Johns	\$43.74	\$100.86	\$144.6
Charlotte	\$52.23	\$88.44	\$140.67
<b>LESLIE</b>	<b>\$70.98</b>	<b>\$72.76</b>	<b>\$143.74</b>
DeWitt*	\$49.08	\$74.01	\$123.09
Delhi Twp*	\$49.08	\$58.80	\$107.88
Lansing BW&L	\$49.08	\$40.80	\$89.88
Mason	\$30.00	\$51.00	\$81.00
Howell	\$33.39	\$37.50	\$70.89
Chelsea	\$17.28	\$48.30	\$65.58
East Lansing	\$15.75	\$11.22	\$26.97

\*Board of Water & Light